

**POWER POD, 3-POWER SOCKETS,  
2-USB PORTS  
INSTALLATION INSTRUCTIONS**

**Package Contents**

1. 1 x Worktop Socket & Power Cord w/ 10A Plug
2. 1 x Template
3. Fixture instructions



**Important Safety Information**

Please read these instructions carefully before attempting to install this product. It is advisable to keep these instructions in a safe place for further reference. These products must not be modified; if any modifications are made, it may invalidate the warranty and may render the product unsafe. **This product is for indoor use only. Keep out of moisture.**

**CAUTION :** To reduce the risk of fire, electric shock, or injury to persons:

- a) Use only insulated staples or plastic ties to secure cords;
- b) Route and secure cords so that they will not be pinched or damaged when the unit is in place;

Cords should be visually examined periodically and immediately replaced when any damage is noted.

IP54 — The pop-up worktop socket has a protection rating of IP54 in accordance with BS EN 60529:1992 when in the retracted position. This prevents any water ingress into the unit from spraying water up to an angle of 60 degrees from vertical and also provides dust protection. Care should be taken to prevent the possibility of water ingress into the unit during use. An external earth (ground) connection point is provided next to the cable exit at the bottom of the unit. For added earth protection, it is advisable to connect an additional earth lead to a well grounded point. Ensure sufficient slack is available for the unit to operate correctly.

**Safety Instructions**

Minimum installation distance from edge of worktop is 1" inch (25mm).  
Install on smooth, flat surfaces only. Do not install over jointed or uneven surfaces (e.g., tiles, melamine joints, etc.)

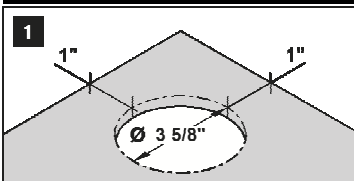
Users must not bend the handles beyond their natural vertical position, and both handles should be returned to their resting positions when pushing the unit down. If the external cable of this product is damaged, contact the manufacturer / service agent for a replacement (subject to terms).

**⚠ This is a Class 1 product. Must be grounded and used with a GFCI outlet if near water sources (min. distance 2 feet).**

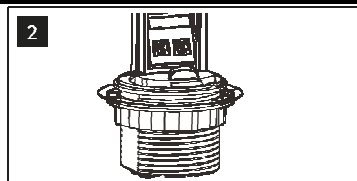
**Warranty**

This product has a Two Year Product Replacement Warranty. Our products will perform as designed. In the unlikely event that your product experiences some fault, we will gladly replace it free of charge. Additionally, the product has a Lifetime Warranty against defects in quality or workmanship.

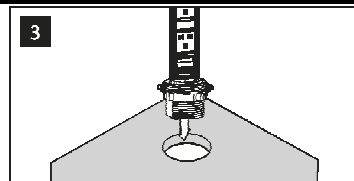
**Installation**



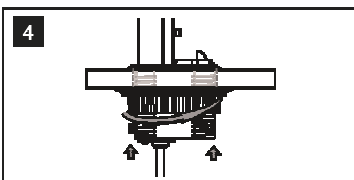
Cut out 3 5/8" diameter hole in work surface. Allow minimum 1" clearance around the cut hole. When choosing location, select a surface between 1/2" and 2" thick.  
**ATTENTION:** Before drilling the hole into the worktop surface, ensure there is sufficient space under the worktop surface for the unit when it retracts to the closed position.



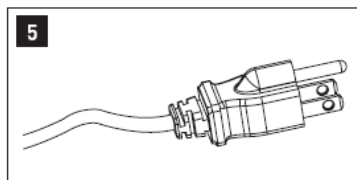
The locking ring and rubber washer are supplied in the packaging. If attached to the mounting collar, remove the locking ring by rotating it in a counter-clockwise direction prior to lowering the unit into its final location. The rubber washer should remain between the mounting collar and the top worktop surface.



Insert socket into hole.



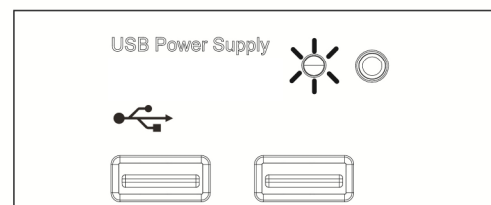
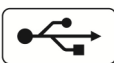
Place locking ring into collar. Turn the locking ring clockwise to tighten. Make sure rubber washer is compressed tightly on top side of worktop. Tighten the screw until ring firmly grips the surface.



Connect cable to power supply, once work has been completed correctly. The product is now ready to use.

**USB CHARGER SPECIFICATIONS**

- Output Voltage: 5VDC
- Output Current: MAX. 1300mA x 2
- Individual switch for power on/off
- LED indicator function when power on



\*Please check output current of USB product before use.